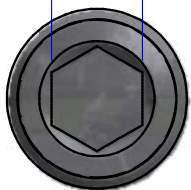
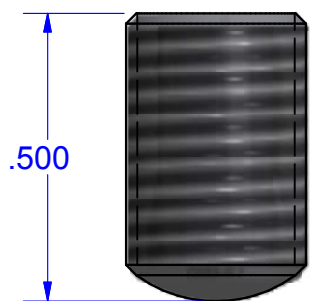


4mm 5/32

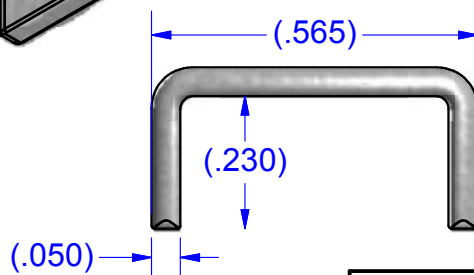
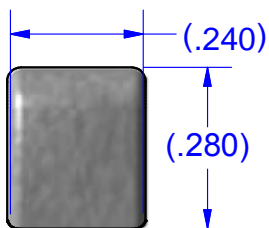
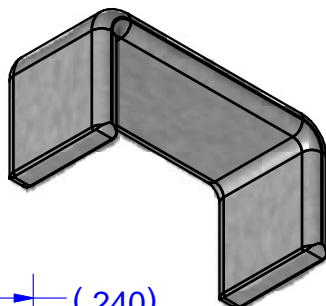
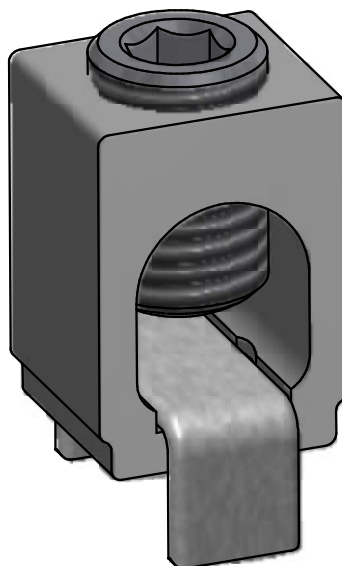


SCREW #12786-HEX
STEEL (ZINC PLATED)



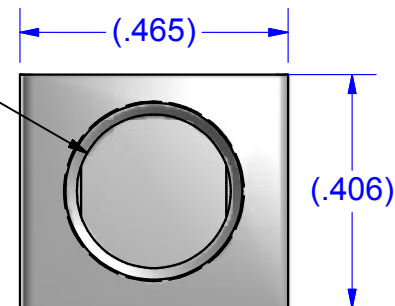
PARTS MARKED

B2C
IHI LOGO
CSA LOGO
UL REGOGNITION LOGO
2-14CU7
2-8AL7

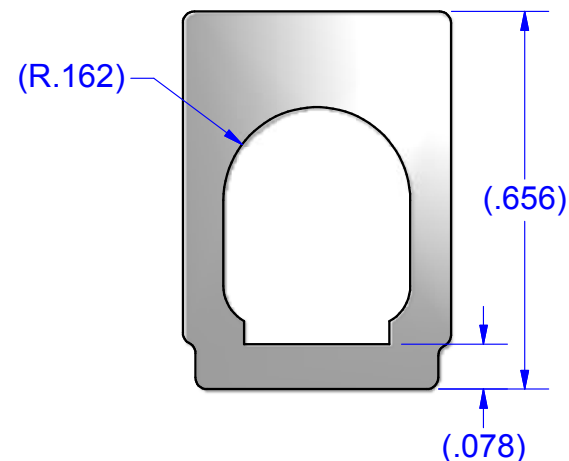


BUS #14257
COPPER (TIN SOLDERABLE)

5/16-24 UNF - 2B



CONNECTOR #B2C
ALUMINUM (TIN PLATED)



CONDITIONS OF ACCEPTABILITY ARE
NOMINALLY PROVIDED BY THE TURN PREVENT
STAPLES OF MINIMUM REQUIRED CROSS
SECTION IN CONJUNCTION WITH ADEQUATE PCB
STRUCTURE.

NOT FOR USE WHERE FAILURE CREATES A HAZARD TO HUMAN HEALTH OR SAFETY. ALL PRODUCTS ARE
SUBJECT TO THIS FULL DISCLAIMER: <http://www.ihiconnectors.com/disclaimer.html>

FOR FURTHER INFORMATION ON THE PROPER USE OF THIS PRODUCT IN SPECIFIC APPLICATIONS SEE
<http://www.ihiconnectors.com/GuideToFlexFlexibleFineStrandedWireCableMechanicalLugsFAQ.html>
http://www.ihiconnectors.com/High_Amp_Wide_Trace_PCB_Wire_Connection.html
<http://www.ihiconnectors.com/Technical-Data-Installation.htm>

THIS DRAWING AND DESIGN ARE THE PROPERTY OF
INTERNATIONAL HYDRAULICS, INC., CLEVELAND,
OHIO, AND MAY NOT BE DUPLICATED, USED FOR
THE BASIS OF DESIGN OR MANUFACTURE WITHOUT
THE WRITTEN PERMISSION OF INTERNATIONAL
HYDRAULICS, INC., CLEVELAND, OHIO.

GENERAL TOLERANCES
±.015 (±0,038mm)

MATERIAL:
SEE ABOVE

FINISH:

INTERNATIONAL HYDRAULICS, INC.

TITLE:

Connector + Bus for PCB Mount
ASSEMBLED CONNECTOR

SIZE:	DRAWN BY: TDS	DWG NO.: B2C-PCB-HEX (SALES)	REV:
-------	-------------------------	---------------------------------	------

DATE: 6/29/09	THIS IS A CAD DRAWING, DO NOT MANUALLY REVISE
-------------------------	--